

suffolkartlink



Annual review 2024/25

Be creative, make friends & live well



Suffolk Artlink's creative course has had a positive and profound effect on me. Not only has it opened my eyes to new and exciting avenues of creative expression, but it has also eased some of the social anxiety that I've always struggled with when meeting new people. It has given me the confidence to be a speaker, instead of just a silent watcher and listener. ”

Suffolk Artlink is a participatory, community arts charity that brings creativity into the heart of communities.

We collaborate with participants, partner organisations and artists to provide diverse and inclusive arts programmes.

Through participation in our creative programmes people learn new skills, improve their wellbeing and build their social connectedness.

We also work strategically to develop the participatory arts and creative health sectors regionally and nationally.

Our Impact



Health and Wellbeing

"It took my mind off my problems, made me feel good and I tried a new skill. It was just such fun!"

"This course has helped me so much with my mental health and also helped me to develop my art skills."

"Taking part takes you away from everything for a couple of hours."

Reduced Isolation

"I feel inspired to get back to doing something creative and I felt connected to others in the group."

"Sharing our drawings, laughing together, helps with everything."

"It makes me feel like a part of society, you make me feel I can actually contribute."

Skills and Learning

"I just go for it! Art explodes out of my brain, flowing onto the page. I start with an idea, and suddenly, my hand is chasing the colours, shapes, and energy that spills out. I love to look at something and then make it my own, turning it into something entirely different."

"I like trying out something new, mono-printing has been very good to try, I find it calming when I'm drawing."



Creative Health

Our arts and heritage social prescribing programmes for people living with complex health needs supports people's wellbeing through creative and mindful activities. Participants explore a variety of art forms and learn creative skills, whilst developing tools to support their health and resilience.



Creative Heritage

We bring different generations together in their own communities to explore Suffolk's rich cultural heritage and create stunning new artworks and resources to celebrate those discoveries.

Creative Progression

Our programmes for learning disabled and neurodivergent artists provide creative spaces for people to focus on their practice, experiment with materials and explore their own interests and ideas with support from experienced professional artists.

Creative Beginnings

We deliver fun, interactive and responsive music sessions for 0-5 year olds and their families in Lowestoft. Our work addresses needs such as the perinatal health and wellbeing of mums in some of Suffolk's least affluent communities.

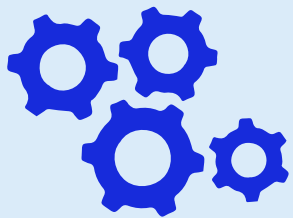
Creative Carers

Our programmes for family carers are opportunities to be creative and connect with others. Sessions allow people to explore their own creativity, learn new skills and feel more connected to others: providing time and space for the carers outside of their caring role.

Creative Development

We have built an early years musical workforce and a growing network of musicians, early years providers and local organisations. We run four network meetings per year and an exciting CPD program which is responsive to the community and practitioners and focuses on artist development, knowledge sharing, inclusion and diversifying musical opportunities in early years music.

Our highlights in 2024/25



284

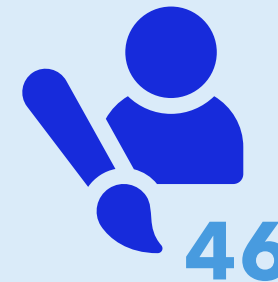
Activities
delivered



Project
participants



Audience
reached



Artists
employed



Volunteers
supported

Our Communities



- 1 Felixstowe Library
- 2 Christchurch Mansion
- 3 Woodbridge Library
- 4 Bury St Edmunds Library
- 5 The Seagull
- 6 Stowmarket Community Centre
- 7 Lowestoft Men's Shed
- 8 Old Felixstowe Community Association
- 9 Haverhill Community Wellbeing Centre
- 10 Jerwood Dancehouse
- 11 RSPB Minsmere
- 12 National Trust - Sutton Hoo
- 13 The Kirkley Centre
- 14 Riverside Family Hub
- 15 The Long Shop Museum
- 16 Leiston Library
- 17 The Bank
- 18 The Ark Childrens Centre
- 19 Kirkley Family Hub
- 20 Bury Town Football Club
- 21 Eastern Angles Centre
- 22 Saxmundham Library
- 23 The Art Station
- 24 Hartismere Place Care Home - Care UK
- 25 Grove Court Care Home - Elizabeth Finn Homes
- 26 Framfield Medical Centre
- 27 Kessingland Library
- 28 Ipswich County Library
- 29 The Battery
- 30 Lowestoft Library
- 31 South Beach
- 32 Beech House Residential Home
- 33 Edgar Sewter Primary School
- 34 Suffolk Archives
- 35 Pakefield Primary School
- 36 Hildesley Court - Sheltered Housing Scheme
- 37 Harleston House Care Home - Lowestoft
- 38 Halesworth Millennium Green
- 39 Halesworth & District Museum
- 40 Leiston Primary School
- 41 The Hold - Home of Suffolk Archives
- 42 Manor Farm Residential Home
- 43 All Saints C of E Primary School
- 44 Kessingland Church of England Primary Academy
- 45 Northfield St Nicholas Primary Academy
- 46 Ipswich Town Football Club
- 47 The Poplars C.P. School
- 48 Norfolk and Norwich University Hospital
- 49 James Paget University Hospitals NHS Foundation Trust
- 50 East Anglia's Children's Hospices

Support Us

Suffolk Artlink relies on donations from individuals and businesses.

- Donate once, every donation, however small, makes a difference.
- Become a Friend of Suffolk Artlink and give monthly by Direct Debit.
- Fundraise for us.

If you'd like to talk to someone about sponsorship and fundraising call Alistair on **01986 873955 extension 1** or email admin@suffolkartlink.org.uk



Amber Donovan is a talented artist with cerebral palsy and a full-time wheelchair user. Amber and her Climb Crew ascended the O2 and raised £1,650 for Suffolk Artlink.



Suffolk Artlink means to me friends and a happy place to go. It means a lot to me and is the favourite day of my week. 




Artist, Amber Donovan.

To make a donation, visit our website:
www.suffolkartlink.org.uk/support-us

Contact information

Suffolk Artlink, Units 13 & 14,
Malt Store Annex, The Cut, 8 New Cut
Halesworth, Suffolk IP19 8BY

Tel. 01986 873955
enquiries@suffolkartlink.org.uk
www.suffolkartlink.org.uk

 [suffolk_artlink](https://www.instagram.com/suffolk_artlink)
 [suffolk.artlink](https://www.facebook.com/suffolk.artlink)
 [@SuffolkArtlink](https://www.youtube.com/@SuffolkArtlink)

Charity No. 1110898 Company No. 05354844

Photography: Douglas Atfield, PagePix; Lewis Wickwar;
Nick Ilott, Suffolk Artlink.

Cover artwork: Patrick Parker, 'Car of the Future', mixed media
painted sculpture, 44x143x44cm

Inside artwork: Fiona Taylor, self portrait, paint on board, 42x30cm